



The Women's Mid-light Polo

Fitted XS → 3XL* 185 GSM

Description

- Set-in sleeve
- Flat knit rib on collar and sleeve hem
- Inside heavy single jersey back neck tape
- Front inserted placket with 2 buttons in matching body colour
- Slit and bartack finish at side seam hem
- Double needle topstitch at shoulder seams
- Bottom hem with narrow double needle topstitch

Composition

Shell - Piqué
100% Cotton - Organic Ring Spun Combed - 185.0 GSM
Panel washed

Care instruction

Wash similar colours together, no ironing on print, wash and iron inside out.



Country of origin

Weaving : Bangladesh
Dyeing : Bangladesh
Assembly : Bangladesh

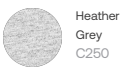
Whites



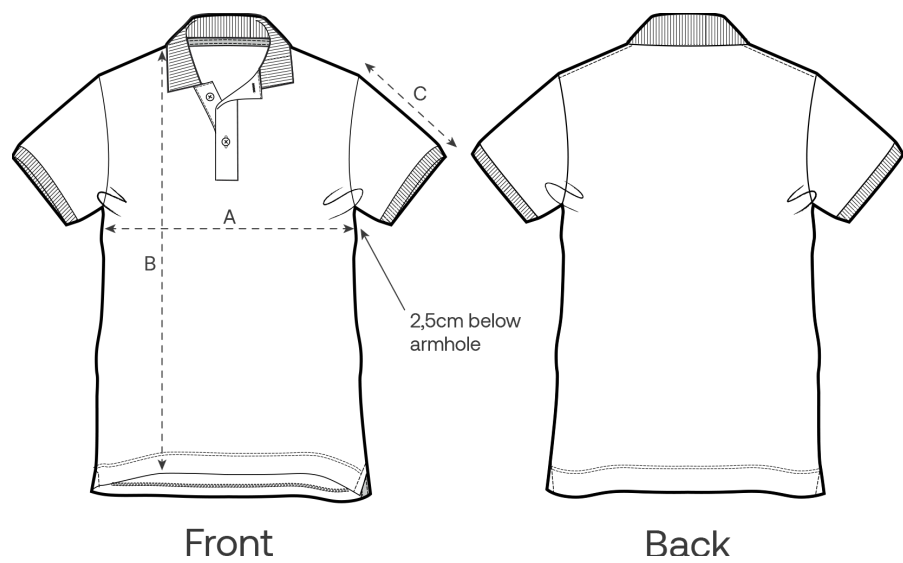
Colors



Essential Heathers



Size Guide



Measurement in cm	XS	S	M	L	XL	XXL	3XL
A - Half Chest	42	45	48	51	55	59	0
B - Body Length	60	62	64	66	68	70	0
C - Sleeve Length	18.5	19	19.5	20	20.5	21	0

Packing

Sizes	XS	S	M	L	XL	XXL
Pieces / bag	5	5	5	5	5	5
Pieces / box	50	50	50	50	50	50