



The iconic kids' crew neck sweatshirt

Medium Fit	3-4/98-104cm → 12-13/152-158cm	300 GSM
------------	--------------------------------	---------

Description

- Set-in sleeve
- 1x1 rib at neck collar, sleeve hem and bottom hem
- Inside back neck tape in single jersey
- Self fabric Half moon at back neck with 3 mm twin needle
- Single needle topstitch at neck collar
- 2 needle topstitch centered on seam at hem, cuff and armhole

Composition

Shell - Brushed  
100% Cotton - Organic Ring Spun Combed - 300.0 GSM  
Panel washed

Care instruction

Wash similar colours together, no ironing on print, wash and iron inside out.



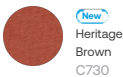
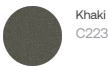
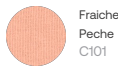
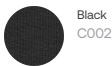
Country of origin

Weaving : Bangladesh  
Dyeing : Bangladesh  
Assembly : Bangladesh

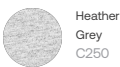
Whites



Colors



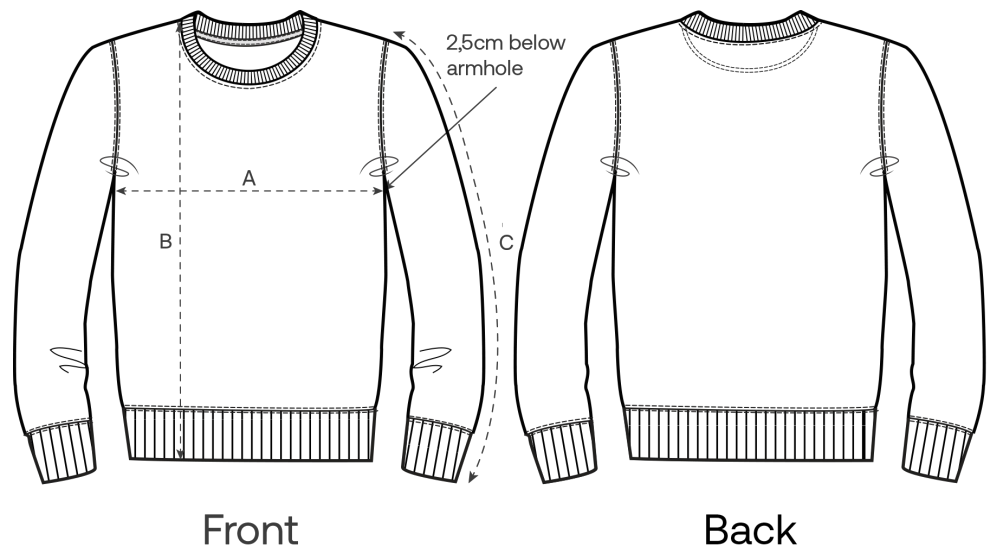
Essential Heathers



Special Heathers



Size Guide



Measurement in cm	3-4/98-104cm	5-6/110-116cm	7-8/122-128cm	9-11/134-146cm	12-13/152-158cm
A - Half Chest	38	40	42	46	50
B - Body Length	43	46	52	59	66
C - Sleeve Length	32	37.5	43.5	50.5	57.5

Packing

Sizes	3-4/98-104cm	5-6/110-116cm	7-8/122-128cm	9-11/134-146cm	12-13/152-158cm
Pieces / bag	5	5	5	5	5
Pieces / box	20	20	20	20	20

Environmental impact for sizes 9-11 years

Please note that the table below shows data for a child aged 9 to 11 years.

Carbon emission in Kg CO2eq	Natural Raw	Eco-heather	Whites & Colours	Heathers*
From cradle to gate <sup>1</sup>	3.23	3.33	4.39	3.74
From cradle to grave <sup>2</sup>	4.11	4.22	5.27	4.63

Water usage in m³	Natural Raw	Eco-heather	Whites & Colours	Heathers*
From cradle to gate <sup>1</sup>	1.68	1.88	2.84	2.03
From cradle to grave <sup>2</sup>	2.33	2.53	3.49	2.68

1 - From the extraction of raw materials to the point it leaves the manufacturer.    2 - From the extraction of raw materials to the product end-of-life.    \* Except Heather Haze