



The iconic kids' polo

Medium Fit	3-4/98-104cm → 12-13/152-158cm	220 GSM
------------	--------------------------------	---------

Description

- Set-in sleeve
- Flat knit rib on collar and sleeve hem
- Inside back neck tape in single jersey
- Front placket with 2 buttons in matching body colour
- Slit at side seams with single jersey facing
- Single needle topstitch at shoulder seams
- Bottom hem with narrow double topstitch
- Back length is longer than front length

Composition

Shell - Piqué
100% Cotton - Organic Ring Spun Combed - 220.0 GSM
Fabric washed

Care instruction

Wash similar colours together, do not iron on print, wash and iron inside out.



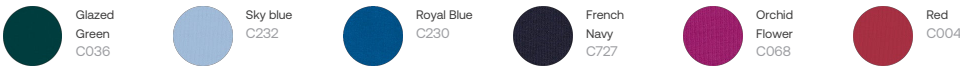
Country of origin

Weaving : Bangladesh
Dyeing : Bangladesh
Assembly : Bangladesh

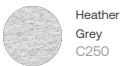
Whites



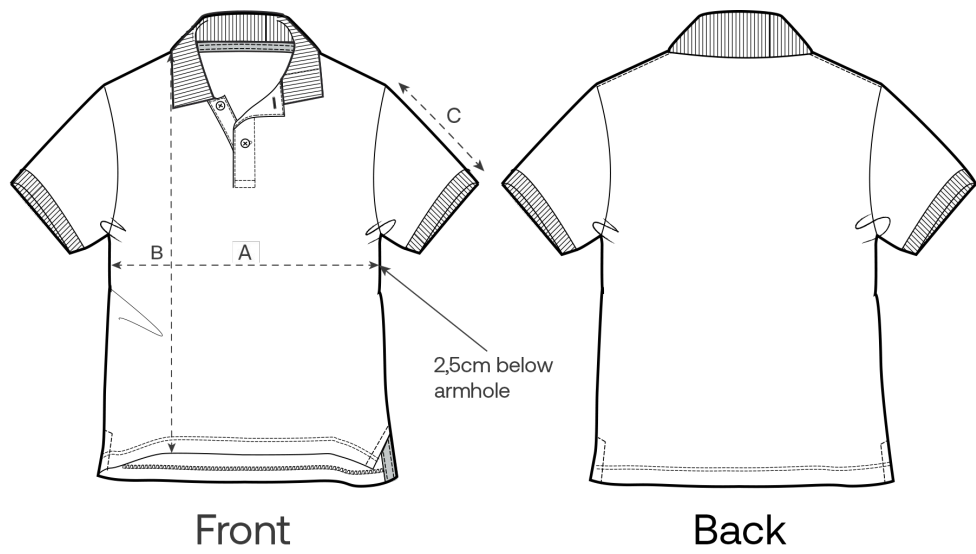
Colors



Essential Heathers



Size Guide



Measurement in cm	3-4/98-104cm	5-6/110-116cm	7-8/122-128cm	9-11/134-146cm	12-13/152-158cm
A - Half Chest	33	35	37	40.5	43.5
B - Body Length	42	46	50	56	61
C - Sleeve Length	12	13	14	17	19

Packing

Sizes	3-4/98-104cm	5-6/110-116cm	7-8/122-128cm	9-11/134-146cm	12-13/152-158cm
Pieces / bag	5	5	5	5	5
Pieces / box	50	50	50	50	50

Environmental impact for sizes 3-4 years

Please note that the table below shows data for a child aged 3 to 4 years.

Carbon emission in Kg CO2eq	Natural Raw	Eco-heather	Whites & Colours	Heathers*
From cradle to gate ¹	10.0	-	1.41	1.41
From cradle to grave ²	2.0	-	3.11	3.12

Water usage in m³	Natural Raw	Eco-heather	Whites & Colours	Heathers*
From cradle to gate ¹	10.0	-	0.66	0.72
From cradle to grave ²	2.0	-	1.6	1.67

Environmental impact for sizes 9-11 years

Please note that the table below shows data for a child aged 9 to 11 years.

Carbon emission in Kg CO2eq	Natural Raw	Eco-heather	Whites & Colours	Heathers*
From cradle to gate ¹	-	-	1.96	1.97
From cradle to grave ²	-	-	3.91	3.92

Water usage in m³	Natural Raw	Eco-heather	Whites & Colours	Heathers*
From cradle to gate ¹	-	-	0.93	1.03
From cradle to grave ²	-	-	2.09	2.19

1 - From the extraction of raw materials to the point it leaves the manufacturer. 2 - From the extraction of raw materials to the product end-of-life. * Except Heather Haze